



Imjin Parkway Widening Project



Employee-Owned

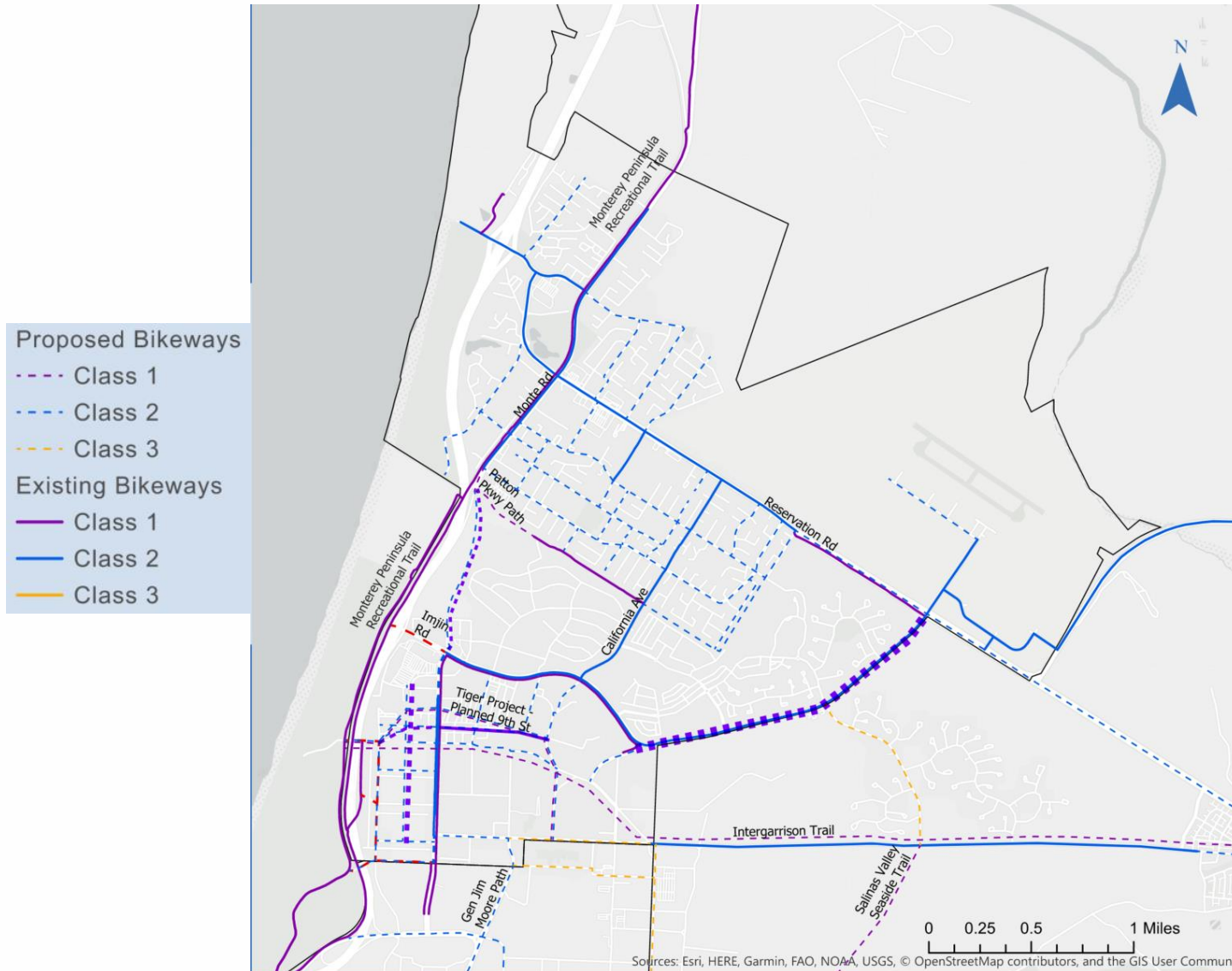
Kimley»»Horn

Expect More. Experience Better.

Project Overview



Project Network Connectivity



Corridor Layout



Corridor Layout



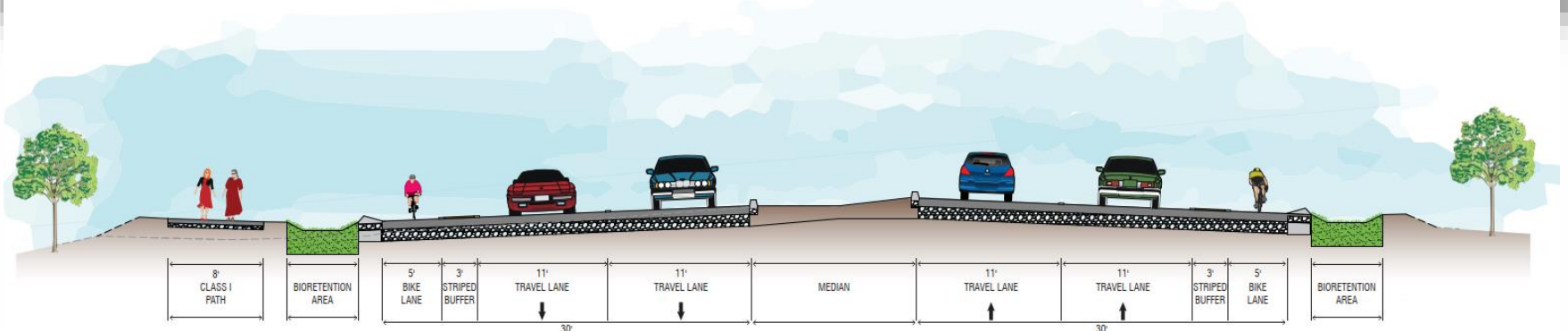
Corridor Layout



Project Overview



Project Overview



Current Project Schedule

- **Environmental Clearance:**
 - October – January 2023



- **Project Bid Timeline:**
 - November – January 2023



- **Construction Timeline:**
 - February 2023 – August 2025 (30 Months)



Funding

Component	Funding Source	Amount	Status
Construction	Local Impact Fee	\$2 million	Marina Impact Fee Program
	Measure X	\$17 million	Measure X Expenditure Plan Commitment
	LPP	\$19 million	Funding Request
	TOTAL	\$38 million	

Summary

- Network Connectivity
- Finalize Environmental Clearance
- Finalize Cost Estimates
- Public Outreach

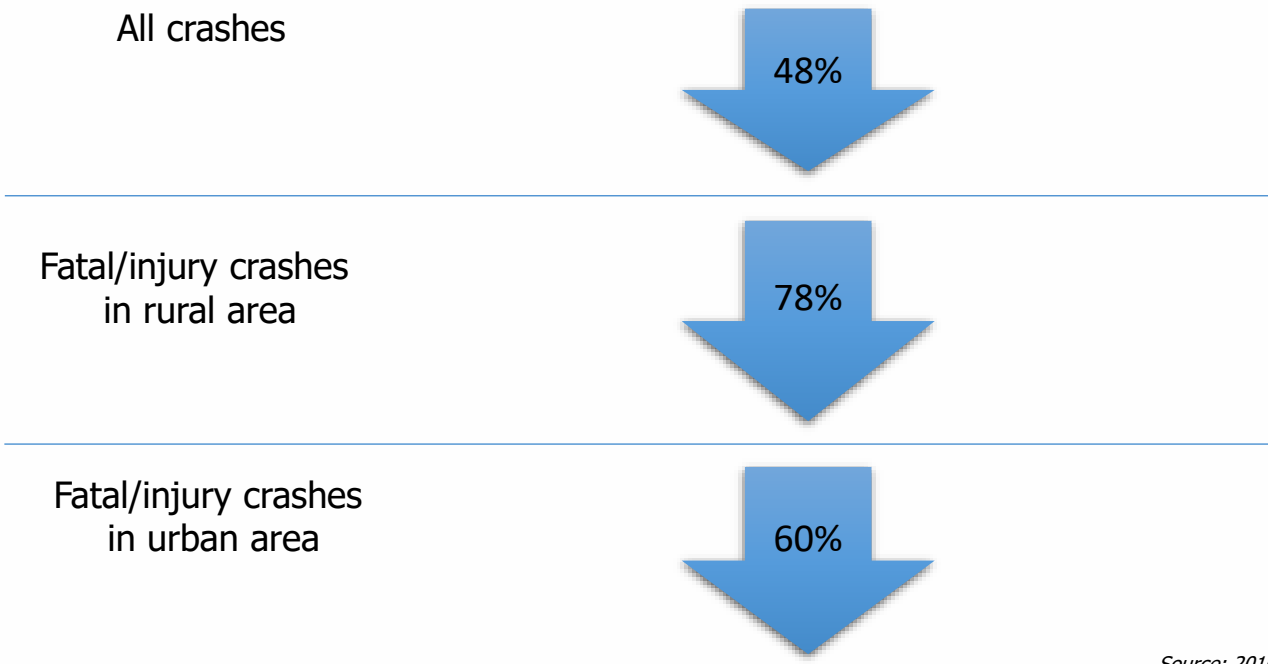


Imjin Parkway Widening Project



Safety Characteristics of Modern Roundabouts

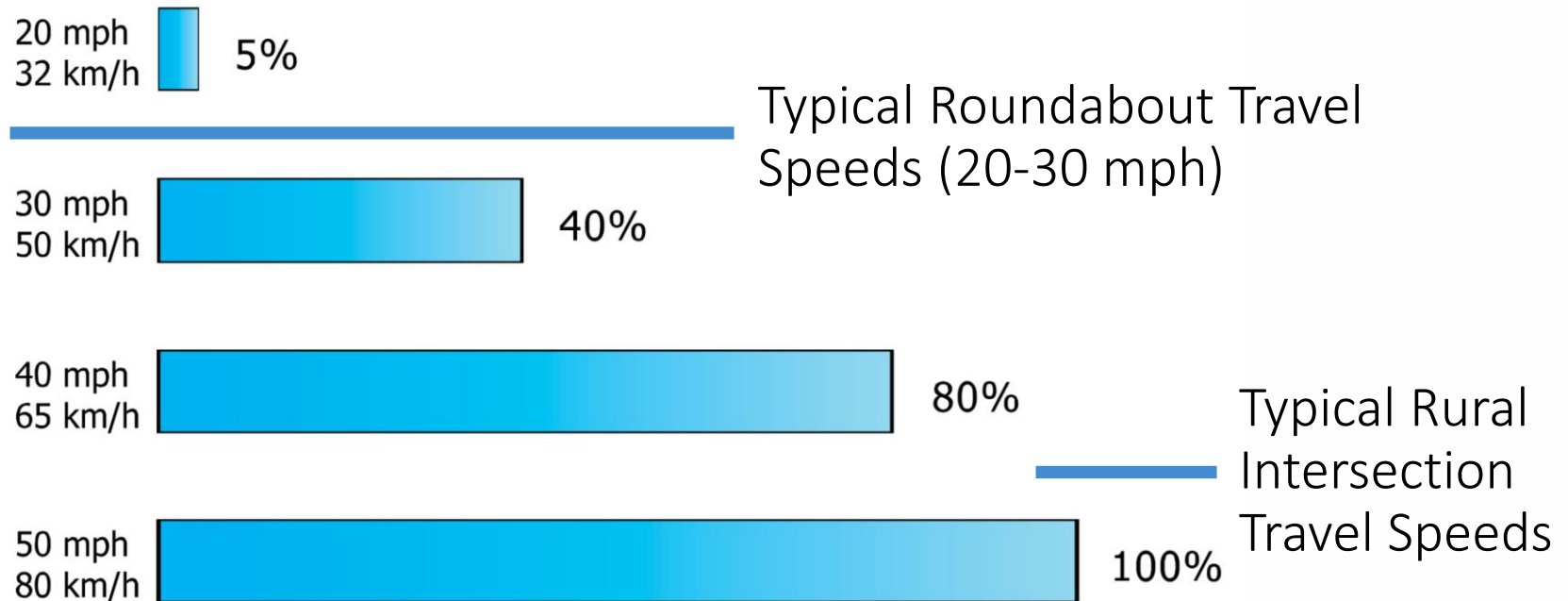
Convert signalized intersection to roundabout



Source: 2010 US Department of Transportation: Federal Highway Administration

Safety Characteristics of Modern Roundabouts

Chance of Pedestrian Fatality if Hit by a Motor Vehicle



Source: Literature Review on Vehicle Travel Speeds and Pedestrian Injuries, National Highway Traffic Safety Administration DOT, 1999

Intersection Delay (2035)



Intersection	Traffic Signals		Roundabouts	
	AM Peak Hour	PM Peak Hour	AM Peak Hour	PM Peak Hour
2. Imjin Pkwy & Preston Dr	7.5	4.5	12.3	14.3
3. Imjin Pkwy & Abrams Dr	36.8	42.0	16.9	21.1
4. Imjin Pkwy & Marina Hts	16.3	8.6	19.5	13.3
5. Imjin Pkwy & Imjin Rd	13.9	12.3	18.2	12.9

Seconds per vehicle

Traffic Comparison Analysis (2035)

Average Travel Time (Minutes)



Time	Traffic Signals	Roundabouts
<i>Average Off-Peak Hour</i>	2.9	2.1

*1 min. reduction, 15-30%, Emergency Response effectiveness

Summary

- Fatalities and injuries less on corridor + Police, Fire, Medical services available for 911 elsewhere
- Power outage – Flooding, Earthquake, Roundabouts unaffected, highest need for EV
- If signals fail on Imjin Pkwy, AWS = total gridlock, no Fire truck access
- EV response times vary between 3 and 7 minutes, 1 minute saves between 30% and 15%
- Emergency Vehicles ✓

