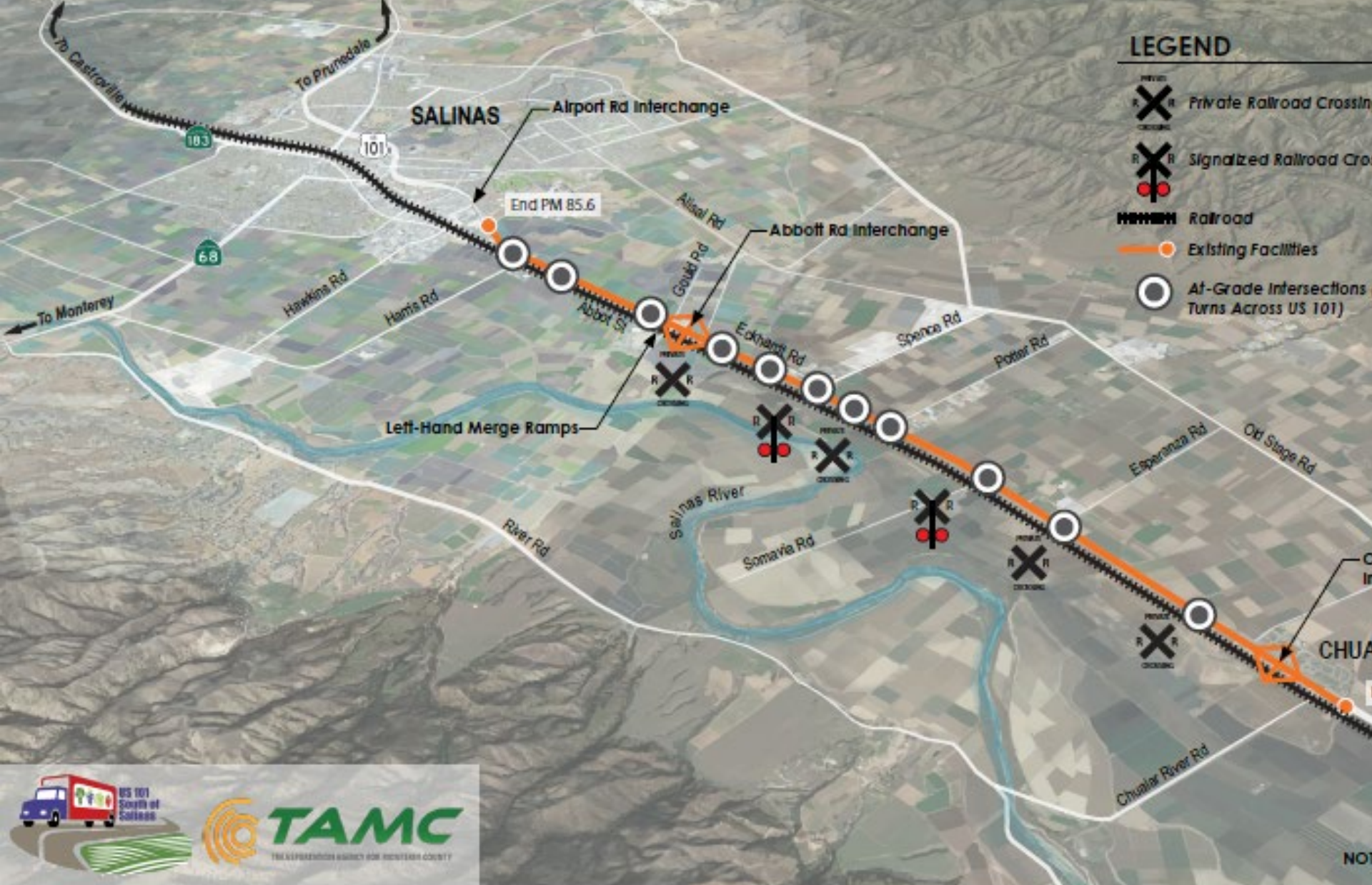




US 101 South of Salinas Project





LEGEND

- Private Railroad Crossing
- Signalized Railroad Crossing
- Railroad
- Existing Facilities
- At-Grade Intersections Turns Across US 101



101 - SOUTH SALINAS CORRIDOR HIGHWAY & INTERCHANGE IMPROVEMENTS
Existing Conditions

3 children airlifted after big rig made an illegal U-turn on Highway 101: CHP



Child ejected in two car crash south of Salinas

By KION546 News Team [FOLLOW](#) 32 Followers
Published August 16, 2018 10:26 AM

UPDATE: 8/16/2018 8:23 a.m. A 3-year-old boy was ejected from a vehicle in a two car crash just south of Salinas.

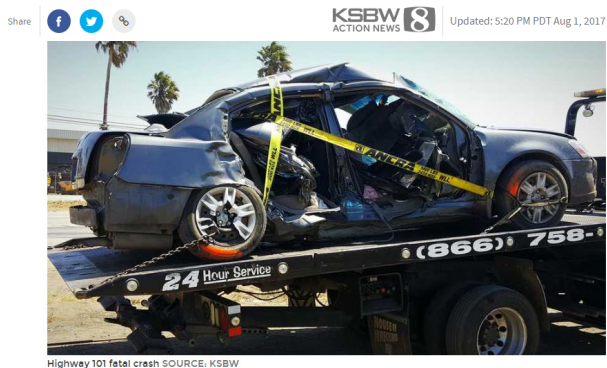
According to the California Highway Patrol, a Ford F-150 truck was attempting to make a turn on Highway 101 near Spence Road when a delivery truck going north struck it. The F

Salinas, CA: 2-Vehicle Crash at Highway 101 and Spence Road

Published 4:29 pm, Jan. 26,2022 | Created by Sanjay

2 Hospitalized after Highway 101 Accident

Double fatal crash near Salinas on Highway 101



Safety Concerns

2-Vehicle Crash on Highway 101 in Spence



SPENCE, Calif. (Jan. 22, 2024) – A fatal crash involving two vehicles happened Monday morning on the northbound Highway 101 and Spence Road in Spence, just south of Salinas.

The deadly collision occurred at around 9:19 a.m. on Jan. 22nd in Monterey County, according to the [California Highway Patrol](#).

Project Overview

- Address safety concerns
- Upgrade antiquated interchanges
- Decisions reflecting Social Equity
- Take a long-term perspective

Project Stakeholders

- Traffic Safety Alliance
- The Monterey County Farm Bureau
- Chualar community
- East Salinas community
- Property owners
- Business owners
- City of Salinas
- County of Monterey
- Ag Land Trust



Committed to Engagement



Really Committed!!!

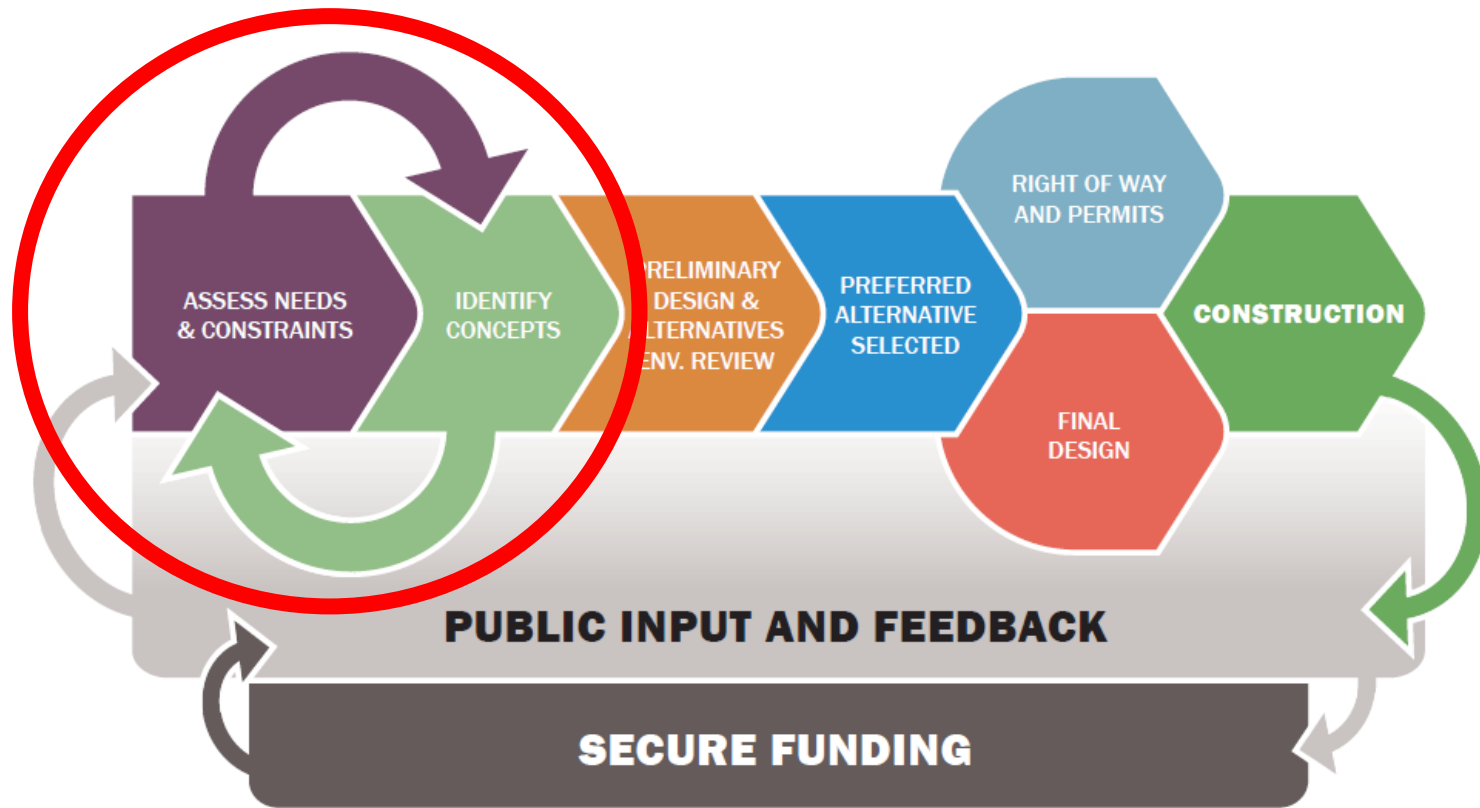
What We Heard:

- Proactively identify a long-term plan.
- Minimize the takings of prime ag land.
- Adequate access to properties.
- Interchanges cannot be closed for long.
- Truck traffic negatively impacts Chualar.
- Airport Blvd interchange is an issue.
- Relocate interchange close to Chualar.
- Relocate interchange close to Airport Blvd

Salinas Ag-Industrial Center



STAGES TO DELIVERING PROJECTS



Next Steps

Identify feasible options by end of year

Start environmental work early next year

Finish environmental work by end of 2026

Finish final design by end of 2027



QUESTIONS?

