



US 101 South of Salinas Corridor Improvement Project





Today's Update

- Reminder of Project Purpose/Need and Scope
- Recent Actions:
 - Outreach
 - Project Alternatives Development
- This week's Notice of Preparation/Scoping meetings
- Next Steps in the environmental review process



3 children airlifted after big rig made an illegal U-turn on Highway 101: CHP



Child ejected in two car crash south of Salinas

By KION546 News Team [FOLLOW](#)
Published August 16, 2018 10:26 AM

UPDATE: 8/16/2018 8:23 a.m. A 3-year-old boy was ejected from a vehicle in a two car crash just south of Salinas.

According to the California Highway Patrol, a Ford F-150 truck was attempting to make a turn on Highway 101 near Spence Road when a delivery truck going north struck it. The F

Salinas, CA: 2-Vehicle Crash at Highway 101 and Spence Road

Published 4:29 pm, Jan. 26, 2022 | Created by Sanjay

2 Hospitalized after Highway 101 Accident

Double fatal crash near Salinas on Highway 101



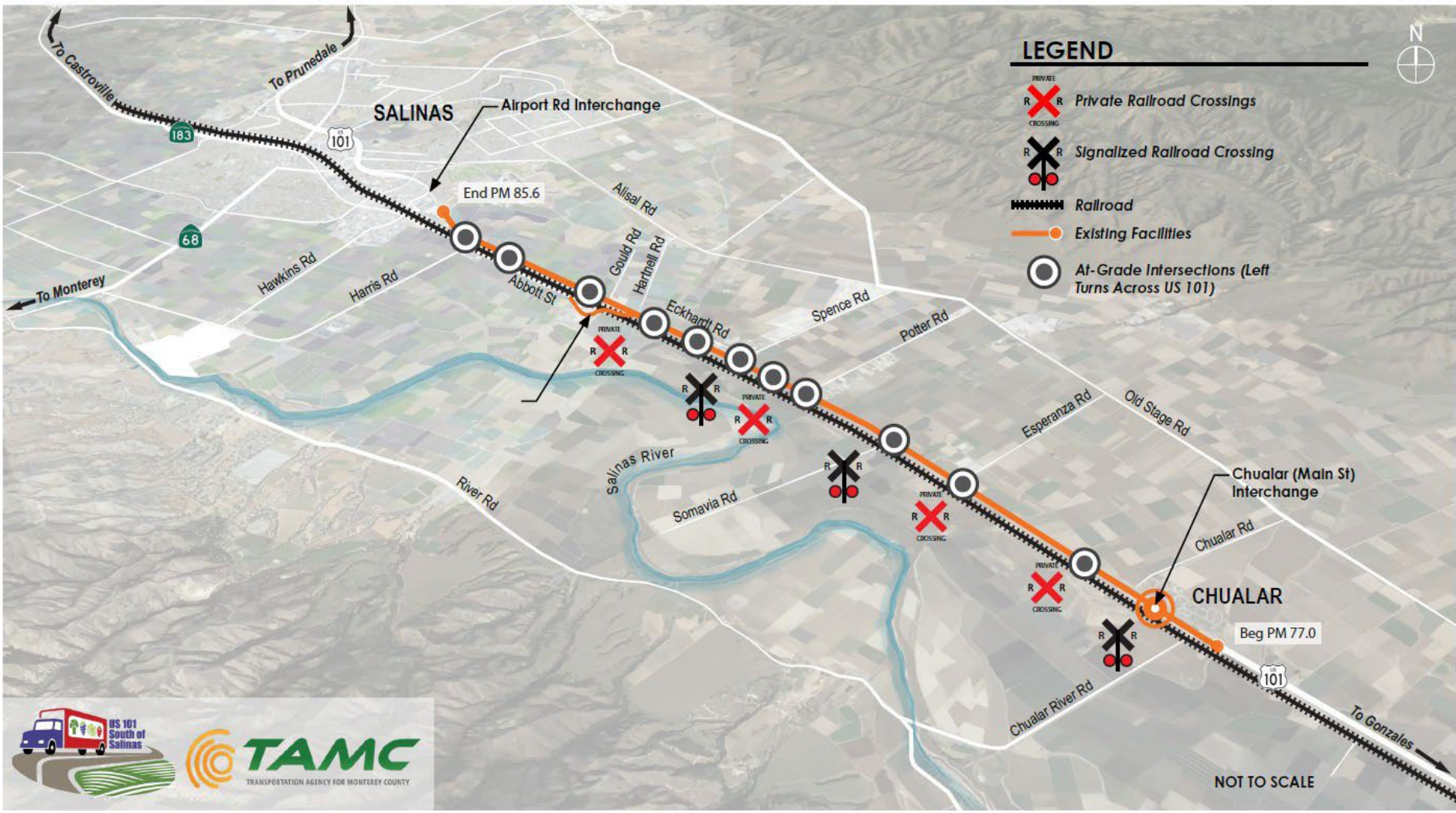
Safety Concerns



2-Vehicle Crash on Highway 101 in Spence

SPENCE, Calif. (Jan. 22, 2024) – A fatal crash involving two vehicles happened Monday morning on the northbound Highway 101 and Spence Road in Spence, just south of Salinas.

The deadly collision occurred at around 9:19 a.m. on Jan. 22nd in Monterey County, according to the California Highway Patrol.



101 - SOUTH SALINAS CORRIDOR HIGHWAY & INTERCHANGE IMPROVEMENTS
 Existing Conditions

October 17, 2024
 Prepared by District 5 Landscape Architecture





Project Purpose

- Address at-grade cross-median turning movements
- Address at-grade railroad crossings
- Provide safe and adequate circulation to adjacent lands for all users





Project Improvements

- Constructing new relocated Abbot Interchange
- Constructing new relocated Chualar Interchange
- Constructing new local roads connecting interchanges
- Incorporating access control through some of all of the project corridor



Outreach to Stakeholders

- Property owners
- Business owners
- Traffic Safety Alliance
- The Monterey County Farm Bureau
- Chualar community
- East Salinas community
- City of Salinas
- County of Monterey
- Ag Land Trust





Committed to Engagement



Really Committed!!!

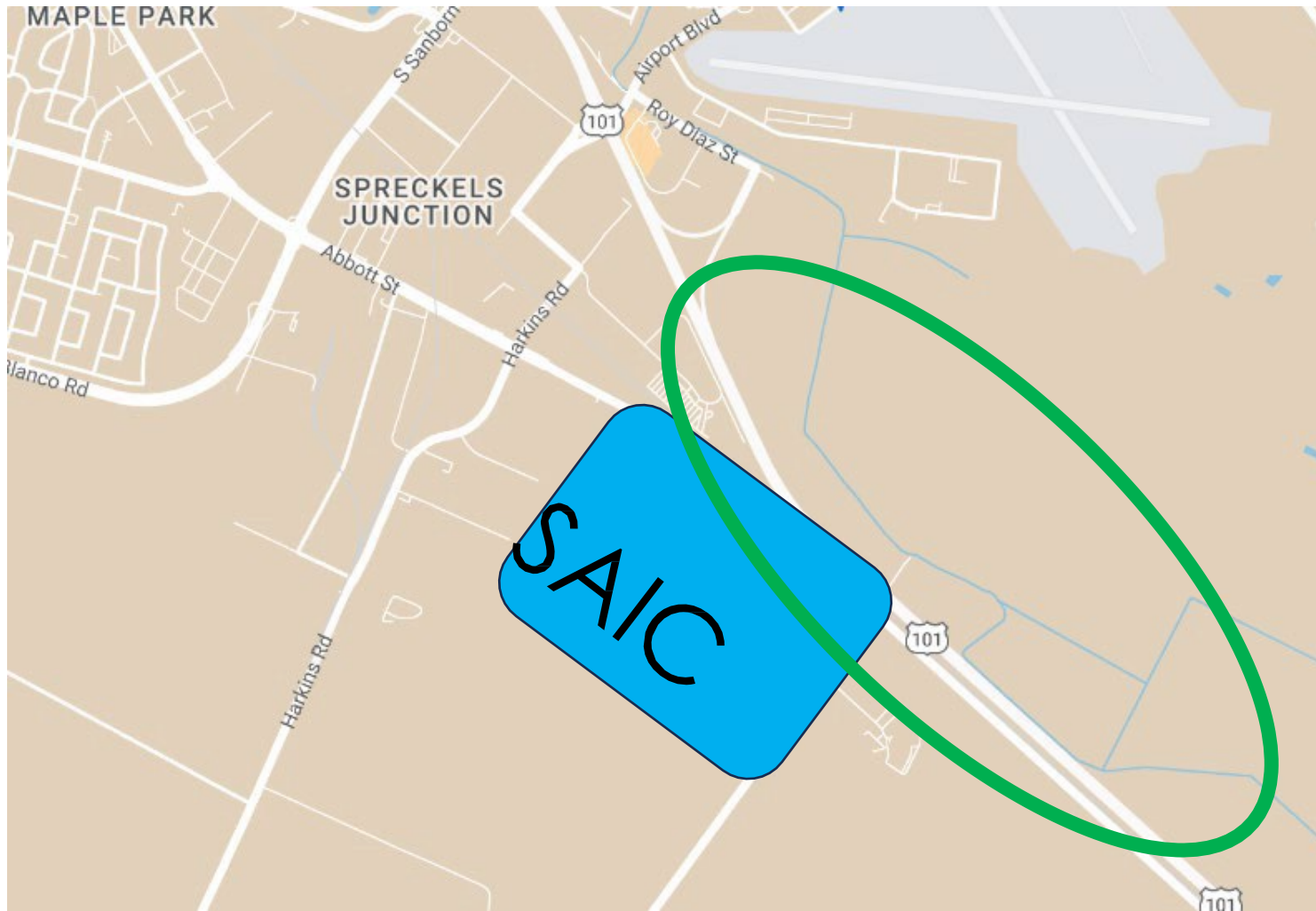


What We Heard

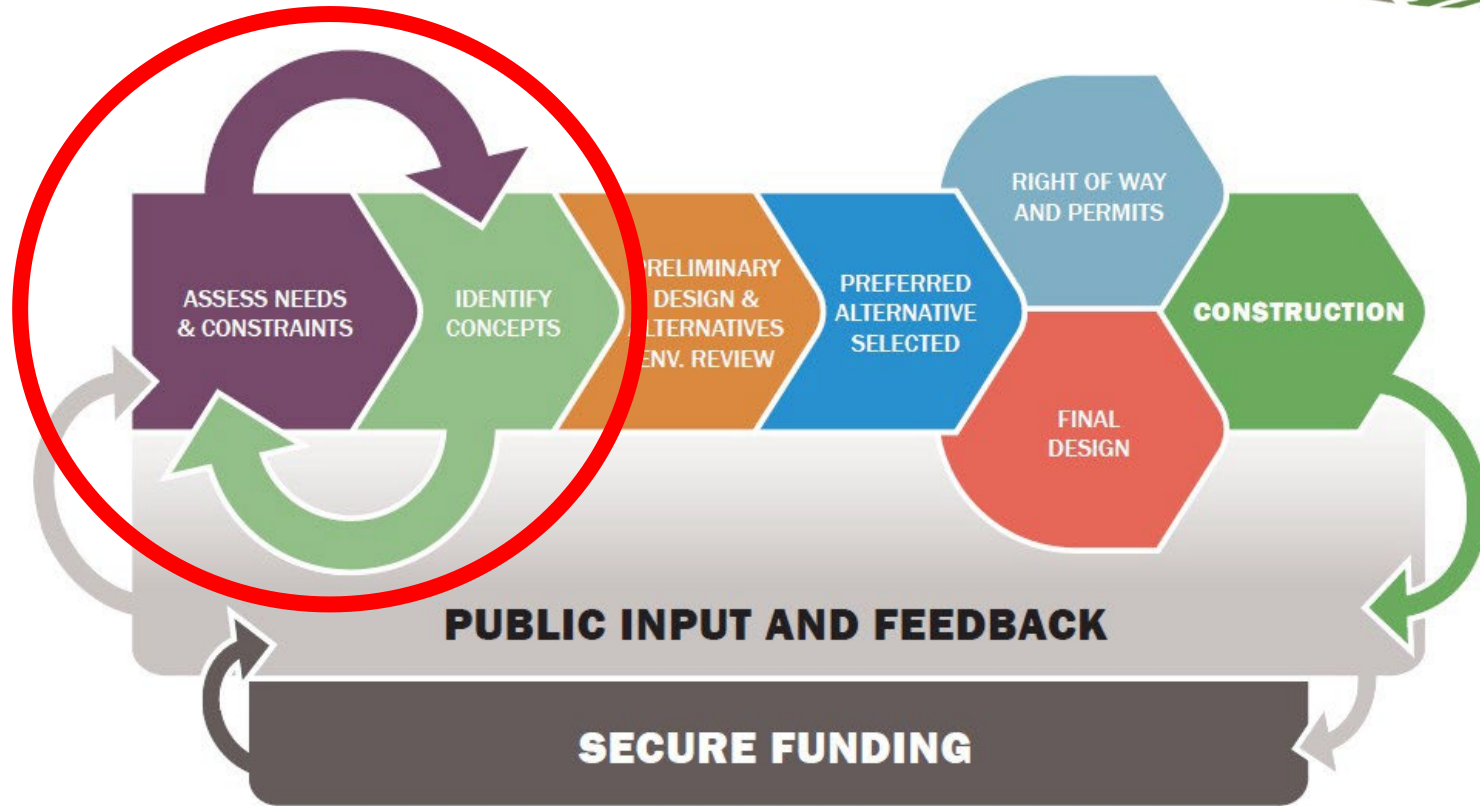
- Proactively identify a long-term plan
- Minimize the takings of prime ag land
- Adequate access to properties
- Interchanges cannot be closed for long
- Truck traffic negatively impacts Chualar
- Airport Blvd interchange is an issue
- Relocate interchange close to Chualar
- Relocate interchange close to Airport Blvd



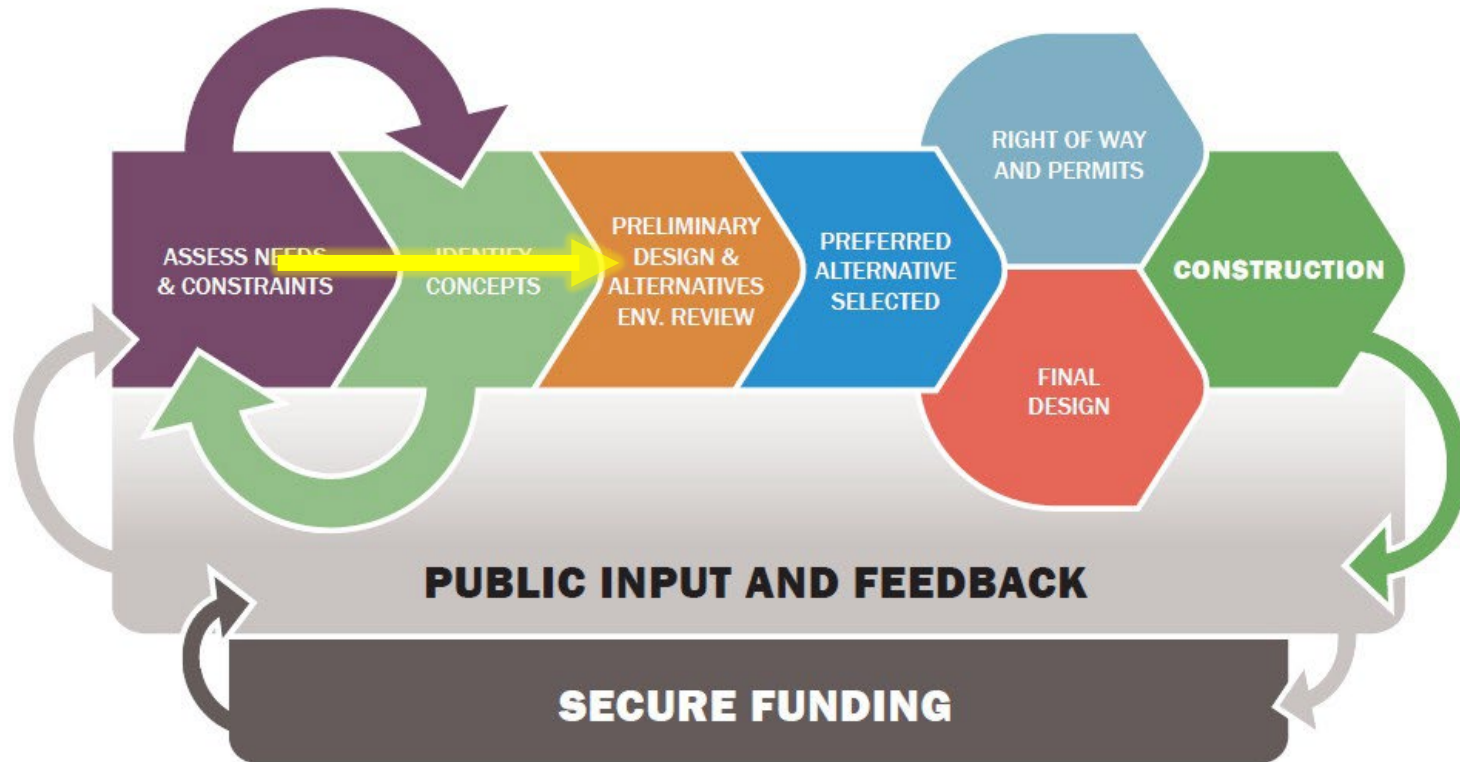
Salinas Ag-Industrial Center

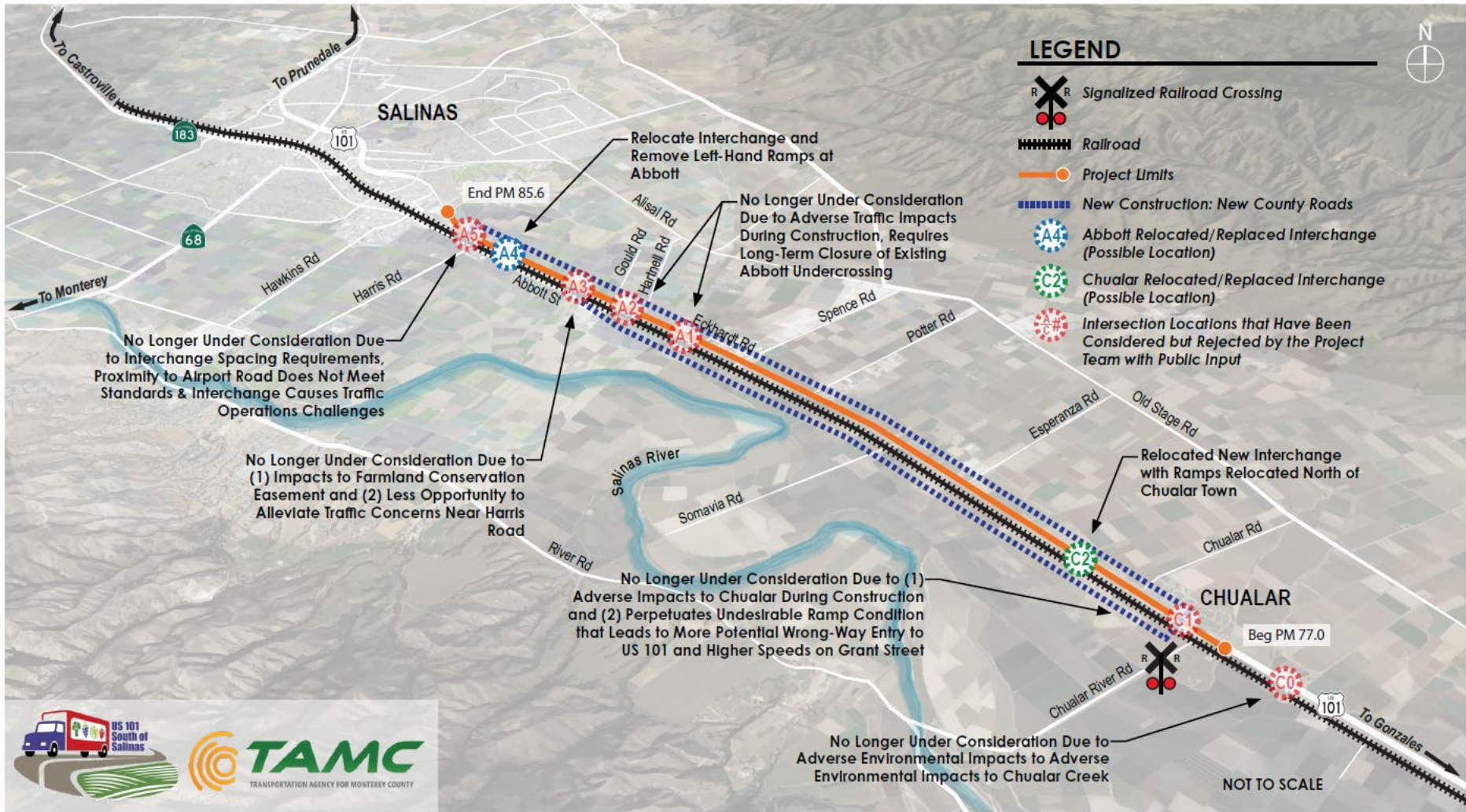


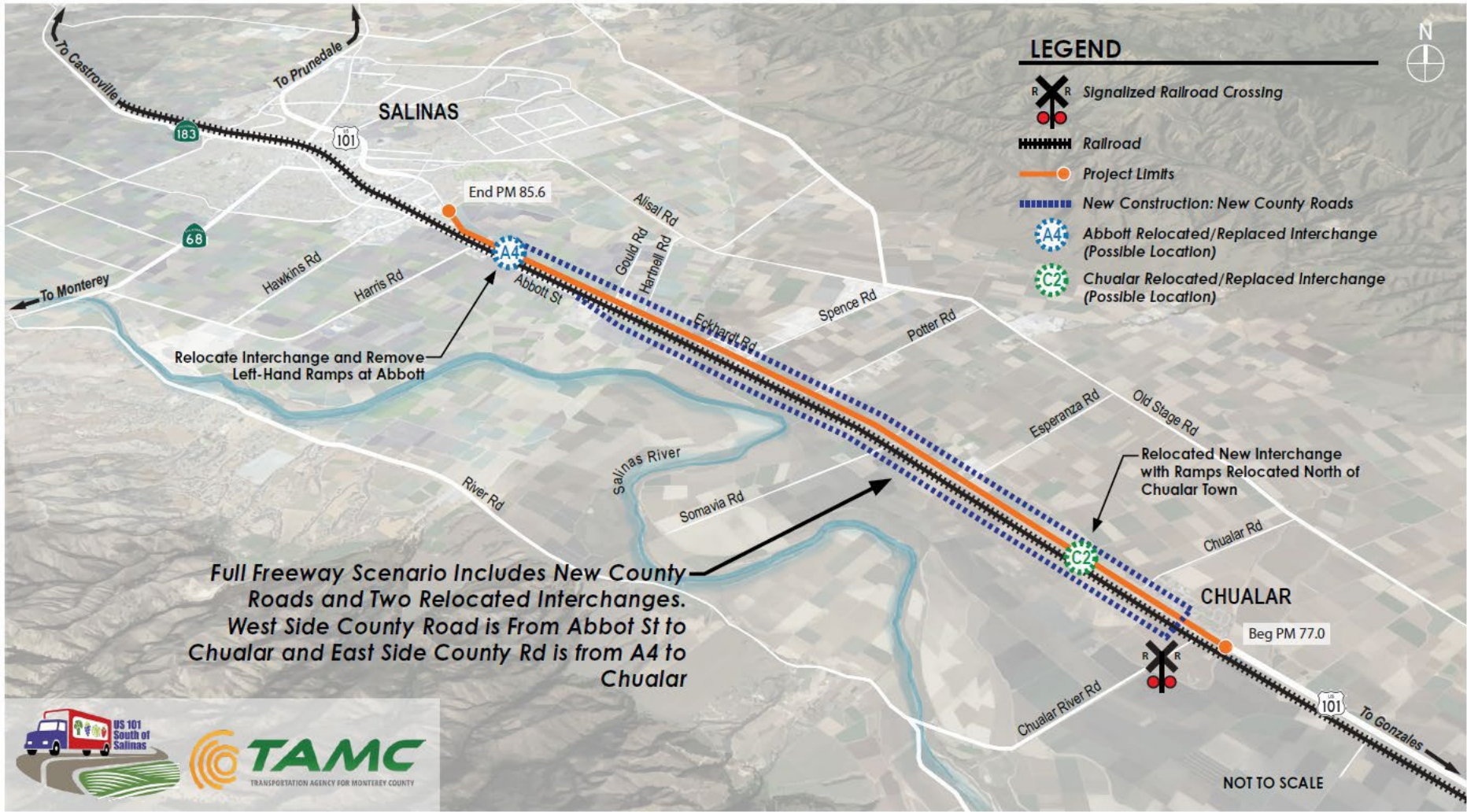
STAGES TO DELIVERING PROJECTS



STAGES TO DELIVERING PROJECTS







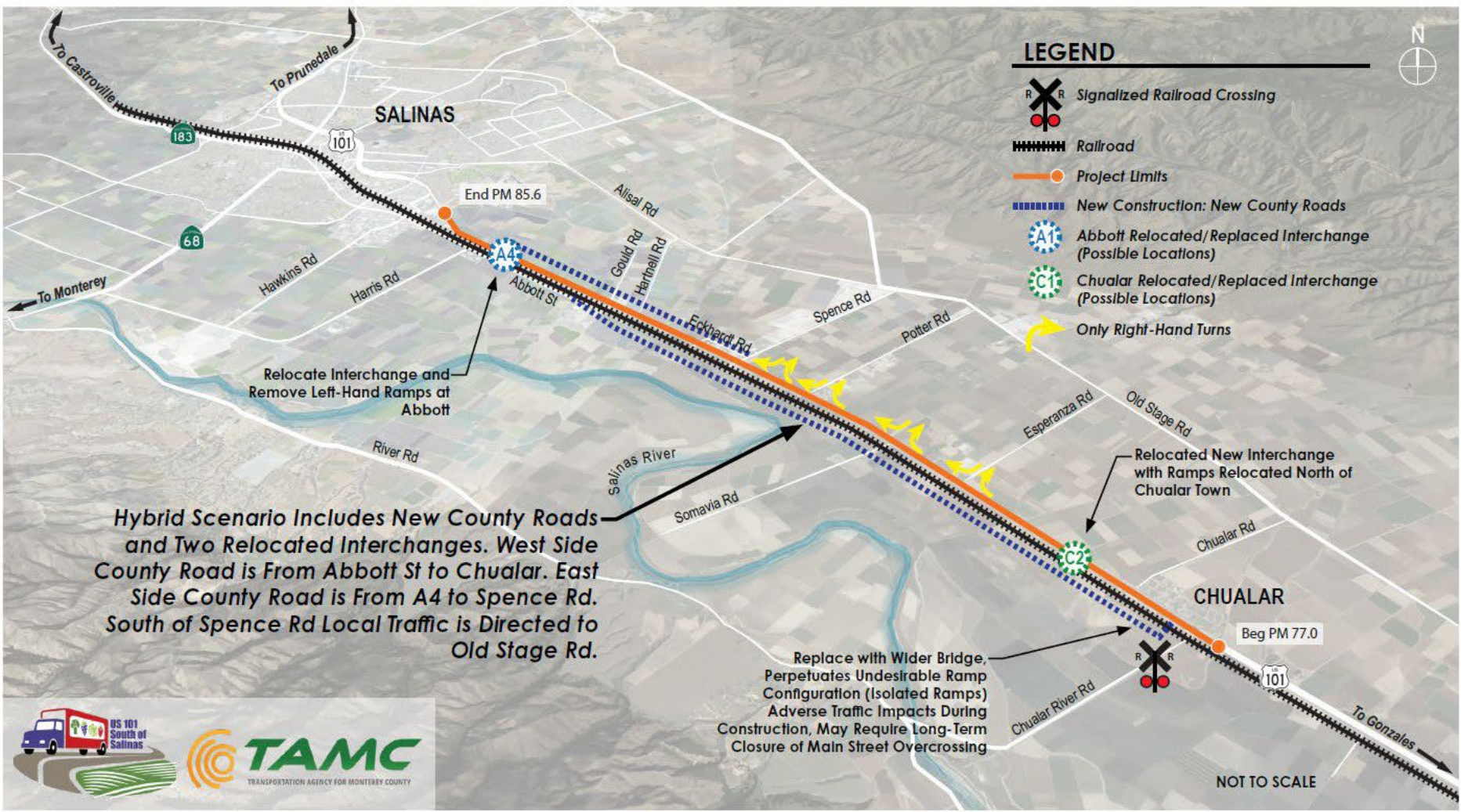
101 - SOUTH SALINAS CORRIDOR HIGHWAY & INTERCHANGE IMPROVEMENTS

Alternative 1 - Full Build: Freeway Condition

October 17, 2024

Prepared by District 5 Landscape Architecture





101 - SOUTH SALINAS CORRIDOR HIGHWAY & INTERCHANGE IMPROVEMENTS
 Alternative 2 - Full Build: Hybrid Expressway Condition

October 17, 2024
 Prepared by District 5 Landscape Architecture





Purpose of Notice of Preparation/Scoping Meeting

- Introduce the project and alternatives being considered
- To provide an opportunity for oral and written public comment on scoping of project alternatives and the environmental document Traffic Safety Alliance
- To inform the public about the upcoming Draft Environmental Document preparation process, project timeline, and future opportunities for public input





Next Steps

Complete Notice of Preparation meetings. NOP comment period ends mid-November 2024

Request/obtain permission to enter from property owners for environmental studies as soon as possible

Conduct environmental studies now to July 2026

Draft environmental document circulation anticipated spring 2026

Final environmental document anticipated late spring 2027

Engineering design anticipated summer 2027 to summer 2031 with phased construction start anticipated fall 2031

Safety Project

- Initiating interim solution
- Schedule expected in January 2025
- Consistent with long-term project



QUESTIONS?

